

Garde-boue avant Scrambler

Scrambler front mudguard

Difficulté - Difficulty 1 / 5

Outils nécessaires - Tools required for assembly

- Clefs allen - outillage standard
- Allen keys - classic tools

Procédure - Process

6x Rondelle
6x Washer

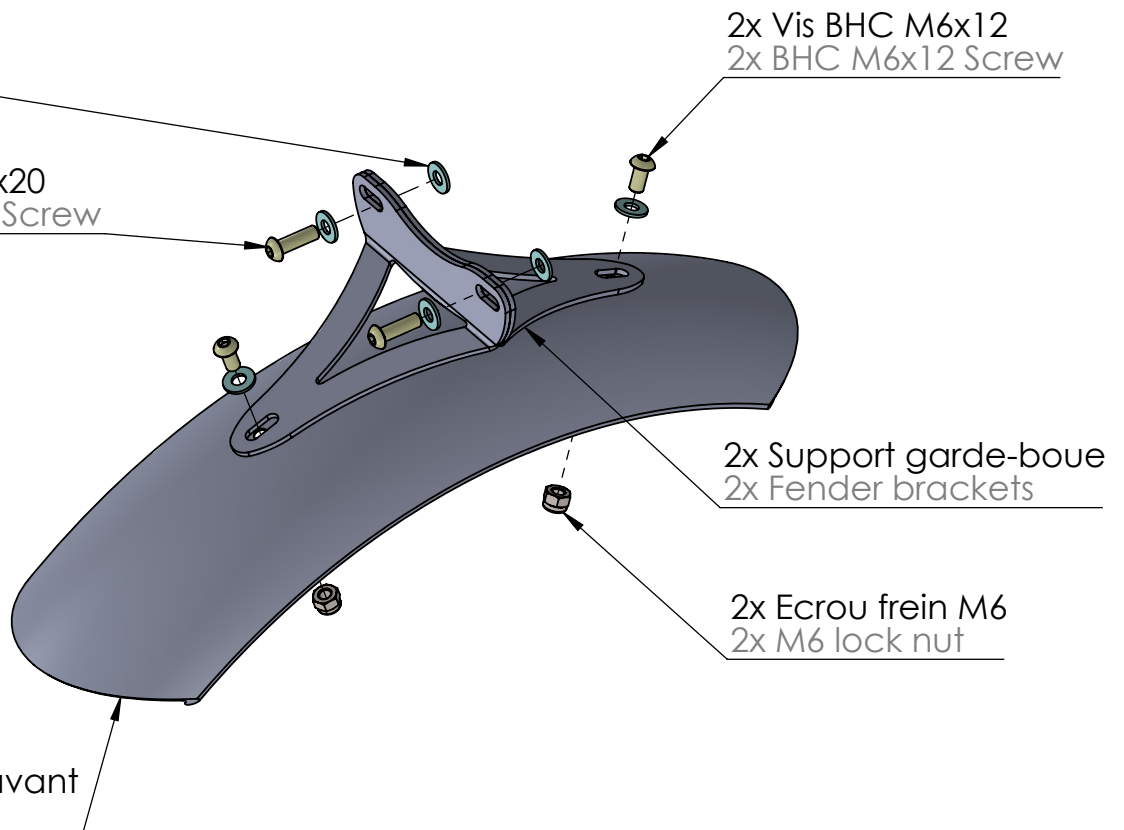
2x Vis BHC M6x20
2x BHC M6x20 Screw

2x Vis BHC M6x12
2x BHC M6x12 Screw

2x Support garde-boue
2x Fender brackets

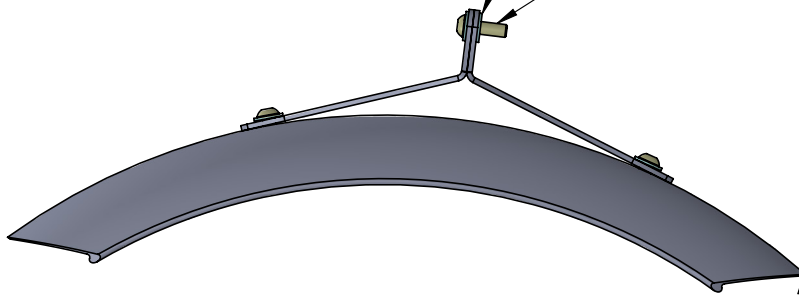
2x Ecrou frein M6
2x M6 lock nut

Garde-boue avant
Front fender



Rondelle
Washer

- Mettre du frein filet
- Visser dans le Té de fourche inférieur
- Put thread lock
- Screw inside the bottom triple tree clamp



- Le côté le plus court va vers l'arrière de la moto
- Shorter side towards the rear of the bike

Montage sur Moto Guzzi
Moto Guzzi mounting



Montage sur Triumph
Triumph mounting



